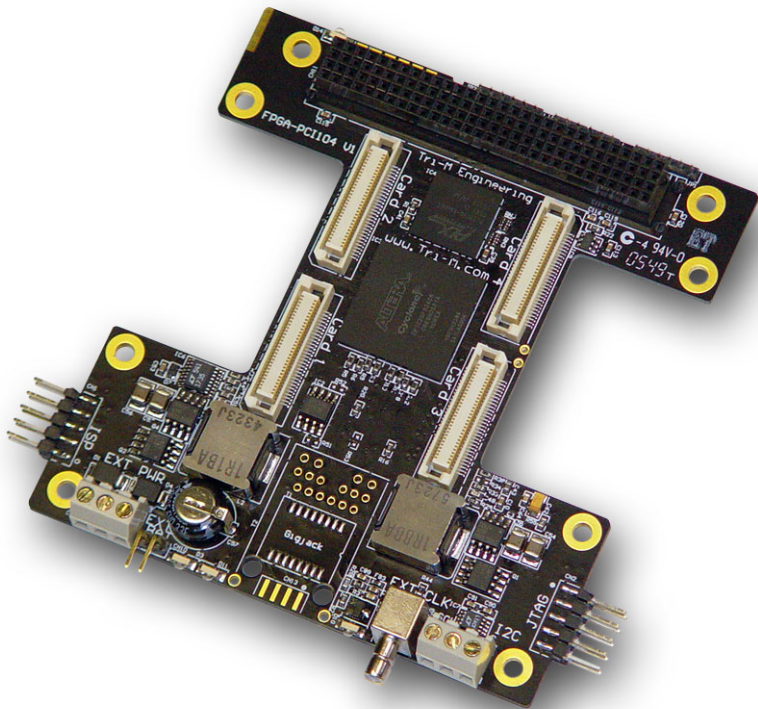


FPGA-PCI104

Building platforms supporting the Altera Cyclone FPGA



features

- Altera Cyclone FPGA, 275MHz core speed
- FPGA configured via on-board EEPROM, PC/104 bus, PCI-104 bus, or JTAG cable
- Four expansion connectors
- 50MHz oscillator, SMB connector
- Real-time counter/clock
- Unique silicon serial number

information

The **FPGA-PCI104** is a building platform that supports up to four daughter cards. Each daughter card location supports interfaces with up to 28 I/O signals. Each daughter card location is symmetrical. Daughter cards can encompass one or more daughter card locations for greater I/O. For example, the FPDB-DEV uses all four daughter card locations and has access to 104 I/O signals.

The **FPGA-PCI104** is PCI-104 compliant and has a full PCI 2.2 interface.

The on-board FPGA is configured via the on-board EEPROM, ISA/PCI bus, or the JTAG port. The configuration EEPROM can be programmed, independently of the FPGA, over the PCI-104 bus or via the ISP port.

The **FPGA-PCI104** is based on the Altera's Cyclone FPGA family: 4K, 12K or 20K logic element parts.

Altera's free Quartus-II basic FPGA design software can be used by the end-user to define the circuit/system functions to be implemented in the on-board FPGA.

The **FPGA-PCI104** have an on-board real-time counter/clock with SuperCap backup, and a unique read-only 64-bit serial number ROM.

Included on the FPGA-PCI104 are the connectors and physical layer circuits for a I2C/SMBus. Also included are a 60 MHz oscillator, and an SMB connector for an external reference frequency source.

The **FPGA-PCI104** is powered from the PCI bus, or external 6V DC to 18V DC supply. Temperature range is 0°C to 85°C.

Ordering Information



this product is
manufactured by:



Part Number	Description
FPGA104	PC/104 compliant FPGA building platform
Part Number	Description
FPDB-GPIO24-OPTO	24 optically isolated (2.5 KV) digital I/O pins
FPBD-Multi232	9 Transmit, 15 Receive 250 Kbps RS-232 pins
FPBD-Multi485	8 bi-directional, 30 Mbps RS-422/485 I/O pins
FPDB-QS	Quarter-size prototyping card
FPDB-HSH	Half-size (horizontal) prototyping card
FPDB-PC/104	PC/104 size prototyping card