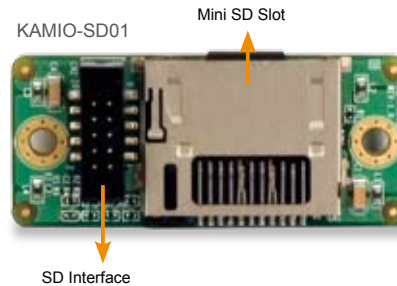
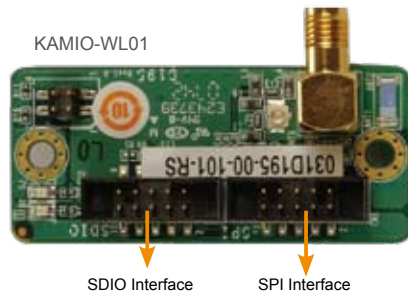


KAMIO-WL01 / SD01

- COTS (Commercial off-the-shelf) 802.11b/g wireless LAN module
- COTS (Commercial off-the-shelf) Mini SD card reader module



Specifications

KAMIO-WL01

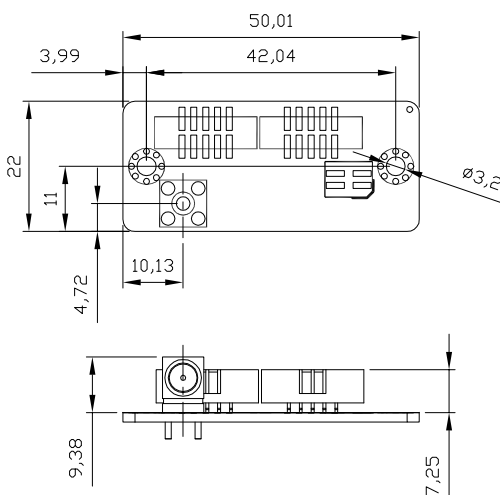
- Compliant with 802.11b and 802.11g standards for 2.4 GHz wireless LAN
- Up to 11 Mbps data transfer rate in 802.11b mode of operation
- Up to 54 Mbps data transfer rate in 802.11g mode of operation
- Connector type: 10-pin 2.0 mm box header
- Antenna: With 100 mm length 2dBi SMA type antenna
- Interface: SPI (Serial Peripheral Interface) or SDIO (Secure Digital Input/Output)
- Chipset: APM 6281
- OS support: Windows® CE 5.0 and Embedded Linux
- Operating voltage: 3.3 V
- Consumption current: < 50 mA
- Operating temperature: 0°C~70°C
- KAMIO integration supports KAMIO-CB01A / CB03 / CB04 / CB05

KAMIO-SD01

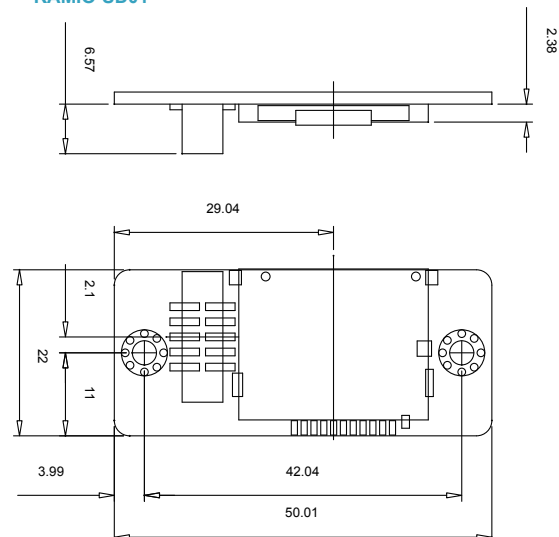
- Support to read Mini SD Card
- Up to 80X data transfer rate
- OS support: Windows® CE and Embedded Linux
- Connector type: 10-pin 2.0 mm box header
- Interface: SDIO (Secure Digital Input/Output)
- Operating Voltage: 3.3 V
- Consumption current: < 100 mA
- Operating temperature: 0°C~70°C
- KAMIO integration supports KAMIO-CB01A / CB03 / CB04 / CB05

Dimensions (Unit : mm)

KAMIO-WL01



KAMIO-SD01



Ordering Information

Part No.	Description
KAMIO-WL01-R20	802.11b/g wireless LAN module
KAMIO-SD01-R10	Mini SD card reader module

Packing List

KAMIO-WL01	1 x KAMIO-WL01 module card 1 x Connection cable 1 x 100 mm 2dBi SMA type antenna 1 x User manual	KAMIO-SD01	1 x KAMIO-SD01 module card 1 x Connection cable 1 x User manual
------------	---	------------	---

1
Application
Server
Platform2
Single
Board
Computer3
IBX Series
POS PC4
AFOLUX
POS
Panel PC5
Video
Capture
Card6
KAMIO
RISC7
IOVU
Open HMI8
VITO
Universal
Controller9
DINO
BLADE10
LCD
Product
Series11
Embedded
System12
Industrial
Computer
Chassis13
Power
Supply14
Peripherals