

IEI-ARGUS

Digital Video Surveillance Software



- Real-time Intelligent 16CH Video Surveillance Software
- Quick Search and Event List Search in Playback
- DI/DO/PTZ Control
- E-map, Showing Camera's Location and Background
- E-mail Alarm System once Triggered by Motion Detection
- Continuous and Event Triggered Recording
- Supports Different Speeds in Playback
- Professional surveillance software bundle in support IVC-168G/268G, IVCE-268G, PM-6814/6844, VITO-350/100 series cards and includes free, so you quick and simple assembly DVR System



IVC-168G/268G/IVCE-268G/PM-6814/PM-6844/VITO-350

Introduction

It was said that, Argus was a giant with a hundred eyes in Greek Mythology thousands of years ago. Due to the fact that he has a hundred eyes, he could simply capture any movement or changes around him.....

IEI Argus is a PC-based digital video surveillance software system. It is designed for enterprise and industrial applications. Argus offers up to 16-channel display capability and provide optimized for processing high-resolution video /audio in real-time. Argus provides versatile features, such as, Real-time intelligent guard, multiple recording schemes, intelligent video analysis, auto alerts and other useful functions. Argus is the best-suited and versatile security solution for your business.



Features

1. Up to 16 channels viewing and playback simultaneously
2. Selection of 1/4/6/9/10/13/16 divided screen
3. Real-time motion-detection Recording
4. Intelligent video analysis (Smart Search)
5. Recorded video/audio archiving with backup features
6. User management for secured viewing and administration
7. Real Time Status Display and Notification: System, Video, Event, Alarm, network connection and backup status can be seen immediately
8. Real Time Status Display and Notification: Four recording modes to schedule or trigger recordings based on camera and sensor input
9. Main program execution actions can be configured
10. Quick Search and Event List search in Playback
11. Customize search by tracking certain motion in a frame
12. Intelligent Guard Instant Response: On Screen Display, E-mail, Sound Alarm, Window Vibration, Digital Signal Output
13. System and Event can be recorded and browser
14. Supports E-map to showing camera location and background.

Functions

	Supports Hardware Devices Compatible with IVC-168G, IVC-268G, IVCE-268G, PM-6814, PM-6844 capture card and VITO-350/100 video server..		Smart Search Customize search by tracking certain motion in a frame		Window Vibration Intelligent Guard instant response via window vibration.
	16 CH Display Up to 16 channels viewing simultaneously.		Logview System and Event can be recorded and browser		E-mail Alert Intelligent Guard instant response via E-mail notification.
	Scheduled Record There are four recording modes to schedule or trigger recordings based on camera and sensor input.		Intelligent Guard Including General Motion, Missing Object, Foreign Object, Single Lost, Lose Focus, Camera Occlusion.		Backup Up to 16 channels record data backup
	Playback Up to 16-channel playback simultaneously		Sound Alarm Intelligent Guard instant response via digital audio output.		E-map Showing Camera's Location and Background

1 Industrial Computing Solutions

2 Embedded Computing Solutions

3 RISC-Based Embedded Solutions

4 Industrial Data Collector/Server Solutions

5 Video Capture Solutions

6 I/O Communication Solutions

7 Panel Solutions

8 Power Supply/Network Communication/Peripherals

MPEG4 File Compression

- Argus owns the software compression technique which could compress MPEG4 at real time.
- All recorded files can be played through Windows Media Player.
- The software compression technique would save a great amount of your hardware space, but Smart Search function can still working on the compressed video file.

Raw Data	: 1.05 GB/Min
MJPEG	: 105MB/Min
MPEG4	: 10.5MB/Min

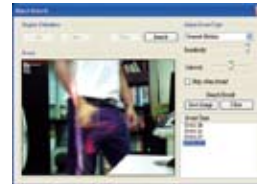


Smart Search

Smart Search is the function which would allow users to investigate when certain event occurs. Traditional software often takes up user's time and energy to sit in front of the monitor to look for possible tracks; however, with Smart Search function, you can now shorten a bunch of time on investigation works..



- Smart Search capability:
- Investigation and evidence collection afterwards.
 - Intelligent search system to quickly find events.
 - Records the time and image of a certain events



Intelligent Guard

Intelligent guard can be detected immediately in real time live video clips. Including General Motion, Missing Object, Lose Focus, Signal Lost, Foreign Object, Camera Occlusion.



General Motion

When a motion was detected at a selected area, an immediate alarm notification will be triggered.



Lose Focus

When camera lost its focus due to strong wind or vibration, an immediate alarm notification will be triggered.



Foreign Object

When a foreign object was detected at a selected area, an immediate alarm notification will be triggered.



Missing Object

When a selected object was shifted or stolen, an immediate alarm notification will be triggered.



Signal Lost

When camera lost its signal due to intended or unintended force, an immediate alarm notification will be triggered.



Camera Occlusion

When the lens of the camera was occluded, an immediate alarm notification will be triggered.

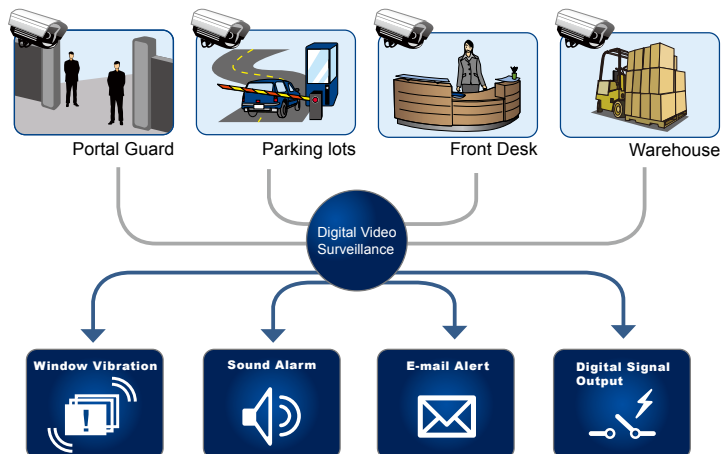
Application

The Best Choice of Security Surveillance

IEI Argus is a professional design of the Graphic User Interface make it easier to operate, and with its versatile functionality, Argus is the most professional digital surveillance solution in the security market.

Application filed, such as portal security, Retailing Store, Traffic station, Hospital, Nursing Home, Freeway, Forbidden Area, Building Lobby, Museum, Airport, Shopping Mall, School.

Argus provide Intelligent Guard and Instant Response, such as On Screen Display, E-mail, Sound Alarm, Window Vibration, Digital Signal Output.



Specifications

Function	Specification	Description	
Monitoring	Status Display	Status prompts and event of system login/Lock, camera Connection status, data and time, sensors, and event alert status	
	Logview	System and Event can be recorded, browser and export as file	
	Screen Split	Selection of 1/4/6/9/10/13/16 divided screen	
	Monitoring Channel	Up to 16 Channels	
	Channel Switch	Supports Keypad, Navigation button, D&D on Channel Display	
	Video Mode	NTSC/PAL/SECAM	
	Resolutions	160*120,176*144,320*240,352*288,640*240,640*480,704*288,704*576,720*240,720*288,720*480,720*576	
	PTZ Control	Embedded pan, tilt and zoom control Supports Pelco D PTZ protocol	
Recording	Compression Format	MPEG4	
	Resolutions	160*120,176*144,320*240,352*288,640*240,640*480,704*288,704*576,720*240,720*288,720*480,720*576	
	Recording Modes	Event Triggered Recording (motion detection), and Scheduled Recording(Provides 4 recording modes for assigning private setup)	
	Recording Quality	Adjustable recording quality for each recording mode	
	Recording Frame Rate	25/30 FPS	
	Audio Recording	Records up to 16 live audio channels	
Playback	Pre & Post Alarm Recording	Adjustable pre-alarm and post-alarm recording time (Pre-alarm recording: 10 seconds, post-alarm recording: 1 hour)	
	Playback Speed	1/4x, 1/2x, 1x, 2x, 4x, 6x fast forward and backward	
	Multi-Channel Video Playback	Simultaneous playback of up to 16 channels	
	Smart Search	Search archives for incidents with the smart search list	
	Print	Printing Active Channel or All Channels	
	Snapshot	Save Image as JPEG or BMP format	
Data Storage	Audio Control	Audio on/off, Voume control	
	Muti-Storage	Multiple storage path for recording with configurable safe capacity limit for each storage space	
	Preserve Files	Choice of whether or not to automatically delete the recorded files after the date of preserve files	
	Backup Data and time Search	Search recorded data with date and time for backup	
	Backup Media	HDD or external USB HDD local storage devices	
Alarm Notification	Backup Data	Recorded video files, event logs, system logs	
	Delete Recorded Data	Choice of whether or not to automatically delete the be recorded files data	
	Intelligent Guard	Including General Motion, Lose Focus, Missing Object, Foreign Object, Camera Occlusion	
	E-mail	Address book can be registered multiple E-mail address, when event be triggered system will give a E-mail alarm notification to selection of contacts.	
	On Screen Display	Shows warning message on display channel screen when event be triggered.	
	Window Vibration	The Main Console will be vibrated when event be triggered.	
	Sound Alarm	Plays a sound alarm when event be triggered.	
Operation	Sensor and DO	Supports 4 Digital In(DI) of sensors and 4 Digital Output (DO),Configurable DI/DO Module	
	User Account Management	Password protection and unlimited user accounts for login	
	Authority Setting	Assign system access rights to each user (main console, system setting, accounting setting, smart guard setting, schedule setting, start/stop surveillance, playback, backup etc.)	
	Multiple Task	Main Console, Playback, Backup simultaneously	
	Hotkey Control	Supports 29 hotkey in Main Console, and 12 hotkey in Playback	
	Language	English / Simplified Chinese	
Supported Devices	IVC-168G-R20	Hardware	Hardware provided 25/30fps@4 channels composite video Supports 1 channel analog audio in
		Software	Software supports 25/30fps@1 channel video/audio monitoring and recording
	IVC-268G-R20	Hardware	Hardware provided 100/120fps@4 channels composite video Supports 4 channels analog audio in
		Software	Software supports 100/120fps@4 channels video/audio monitoring and recording
	IVCE-268G-R20	Hardware	Hardware provided 100/120fps@4 channels composite video Supports 4 channels analog audio in
		Software	Software supports 100/120fps@4 channels video/audio monitoring and recording
	PM-6814-R20	Hardware	Hardware provided 25/30fps@4 channels composite video Supports 1 channel analog audio in
		Software	Software supports 25/30fps@1 channel video/audio monitoring and recording
	PM-6844-R20	Hardware	Hardware provided 100/120fps@4 channels composite video Supports 4 channels analog audio in
		Software	Software supports 100/120fps@4 channels video/audio monitoring and recording
	VITO-350-R20	Hardware	Hardware provided 100/120fps@4 channels composite video Supports 4 channels analog audio in
		Software	Software supports 100/120fps@4 channels video/audio monitoring and recording



Minimum System Requirements

CPU	Intel® Pentium® 4 2.4GHz with Hyper-threading
RAM	1GB (2GB or above recommended)
Video RAM	32 MB or above recommended
Display Chip	ATI Radeon 9550 or above NVIDIA 6200 or above
Display Resolution	1024X768 24bits or above
Operating System	Windows2000 SP4 / Windows XP Pro SP2
DirectX	9.0c or above
Required space for installation	100MB
Recommended HD free space	250GB or above
Netware	Wire: Ethernet 100 baseT or above, Gigabit LAN recommended Wireless: IEEE802.11b, IEEE802.11g recommended

1

Industrial Computing Solutions

2

Embedded Computing Solutions

3

RISC-Based Embedded Solutions

4

Industrial Data Collector/Server Solutions

5

Video Capture Solutions

6

I/O Communication Solutions

7

Panel Solutions

8

Power Supply/Network Communication/Peripherals