

PICMG 1.3 Backplane

Selection Guide

 PAC series wall-mount Chassis

 4U Rack-mount Chassis



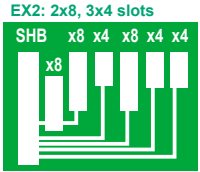

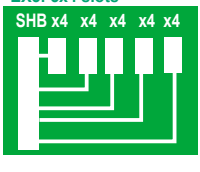

 2U Rack-mount Chassis

Backplane		SPE-4S	SPE-6S	SPE-9S	SPXE-9S	SPXE-14S
Total	Slot	4	6	9	9	14
PCIe	x16					
	x8	2(x16connector)		1+1(x16connector)	1+1(x16connector)	1(x16connector)
	x4	1	5	3	2	
	x1					12
	PCI-X				2	
	PCI			3	2	
PSU TYPE		24+4-pin ATX	24+4-pin ATX	24+4-pin ATX	24+4-pin ATX	24+4-pin ATX
Chassis Option		PAC-106G PAC-107G PAC-1000G PACO-506F	PAC-106G PAC-107G PAC-1000G PACO-506F	PAC-125G	PAC-125G	RACK-305G RACK-360G RACK-814G RACK-3000G

IEI Server Grade Backplane Solution

Server grade backplane accommodates PCIe x8 and multiple PCIe x4 add-on cards. It is specially designed for extensive data transfer application such as data storage server or applications that require more than one PCIe x4 or four PCIe x1 cards. Given the multiple PCIe x4 and x1 supports, it provides a more cost effective solution for end-users by reducing the number of systems.

Server Grade Backplane

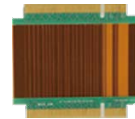
Example	Corresponding Model
EX1: 2x8 & 1x4 slots 	SPE-4S 
EX2: 2x8, 3x4 slots 	SPE-9S SPXE-9S 
EX3: 5x4 slots 	SPE-6S 



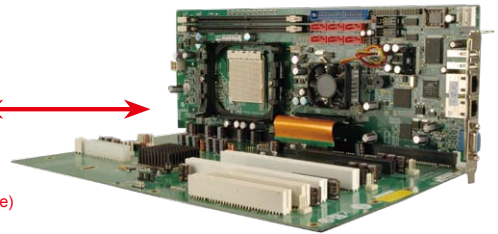
Server Grade	Integrated, small foot print enhances schematic stable and performance
AMD64	AMD Socket AM2 32/64-bit single/Dual Core CPU supported
ECC support	Reduce the latency of memory access by integrated memory controller
Expansion	28 Configurable PCIe lanes provide direct signal transferring path on the backplane w/o switch
Connectivity	Dual GbE support Load-balancing/TOE/ ASF2.0 for data distribution and remote management
Data Protection	6 SATA II with RAID Function supported

Now earning more PCIE Bandwidth and Flexible PCIE Configuration than Standard PICMG1.3 Via SPCIE-3600AM2

IEI SPE / SPXE series backplanes
 SPE-4S
 SPE-6S
 SPE-9S
 SPXE-9S
 SPXE-14S



X8-PCIE-CB-R10 FFC(Flexible Flat Cable)

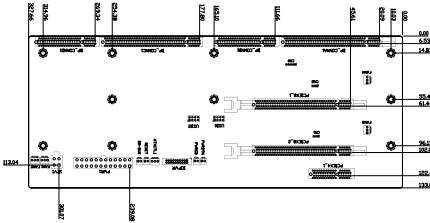


		SPCIE-3600AM2					
		Type	A	B	C	D	E
PCIe Slots Available (Non-switch)	x16	1	1	1	-	-	-
	x8	1	1	-	3	2	1
	x4	1	-	2	1	3	5
	x2	-	-	2	-	-	-
	x1	-	4	-	-	-	-
Backplane Solution		IEI SPE/SPXE BP					
Option		To perform bandwidth of full 28 PCIe Lanes, external PCIe x8 converter Board(X8-PCIE-CB-R10) must be used. SPE-4S / SPE-6S is compliant for PICMG1.3 sever-grade SBC with 20 PCIe Lanes Supported					

System Solution for options

Backplane	Total Slot	PCIe						PSU Type	Chassis Option
		x16	x8	x4	x1	PCI-X	PCI		
SPE-4S	4	-	2 (x16 connector)	1	-	-	-	24+4-pin ATX	PAC-106G, PAC-107G, PAC-1000G, PACO-506F
SPE-6S	6	-	-	5	-	-	-	24+4-pin ATX	PAC-106G, PAC-107G, PAC-1000G, PACO-506F
SPE-9S	9	-	1+1 (x16 connector)	3	-	-	3	24+4-pin ATX	PAC-125G
SPXE-9S	9	-	1+1 (x16 connector)	2	-	2	2	24+4-pin ATX	PAC-125G
SPXE-14S	14	-	1 (x16 connector)	-	12	-	-	24+4-pin ATX	RACK-305G, RACK-360G, RACK-814G, RACK-3000G

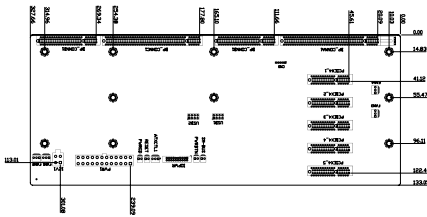
SPE-4S



Ordering Information

- SPE-4S-R10 4 Slot PICMG 1.3 Backplane with 2 PCIe x16 (x8 signal) and 1 PCIe x4 slots
- PAC-106G-R20 6-slot full-size industrial chassis
- PAC-107G-R20 6-slot full-size industrial chassis
- PAC-1000G 6-slot full-size industrial chassis
- PACO-506F 6-slot full-size industrial chassis

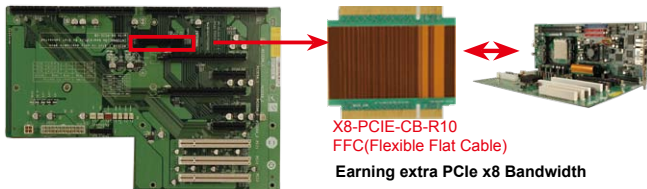
SPE-6S



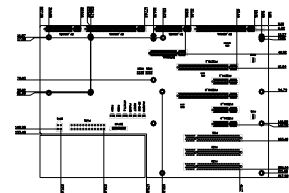
Ordering Information

- SPE-6S-R10 6 Slot PICMG 1.3 Backplane with 5 PCIe x4 slots
- PAC-106G-R20 6-slot full-size industrial chassis
- PAC-107G-R20 6-slot full-size industrial chassis
- PAC-1000G 6-slot full-size industrial chassis
- PACO-506F 6-slot full-size industrial chassis

SPE-9S



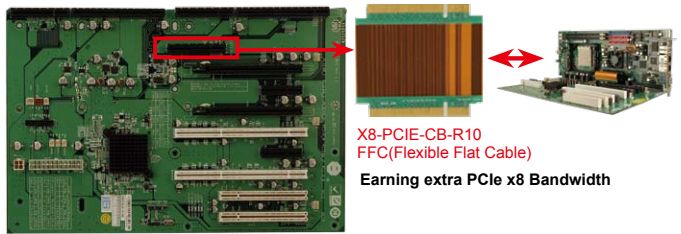
X8-PCIE-CB-R10
FFC(Flexible Flat Cable)
Earning extra PCIe x8 Bandwidth



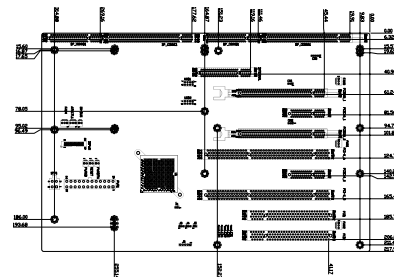
Ordering Information

- SPE-9S-R10 9 Slot PICMG 1.3 Backplane with 2 PCIe x16 (x8 signal) 3 PCIe x4, and 3 PCI
- PAC-125G-R20 10-slot full-size industrial chassis
- X8-PCIE-CB-R10 PCIe x8 Connection Board for SPCIE-3600AM2

SPXE-9S



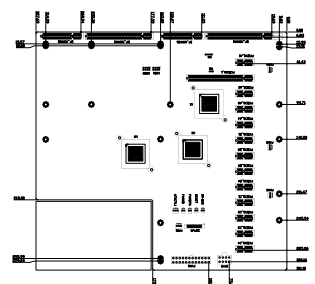
X8-PCIE-CB-R10
FFC(Flexible Flat Cable)
Earning extra PCIe x8 Bandwidth



Ordering Information

- SPXE-9S-R10 9 Slot PICMG 1.3 Backplane with 2 PCIe x16 (x8 signal) 2 PCIe x4, 2 PCI-X, and 2 PCI
- PAC-125G-R20 10-slot full-size industrial chassis
- X8-PCIE-CB-R10 PCIe x8 Connection Board for SPCIE-3600AM2

SPXE-14S

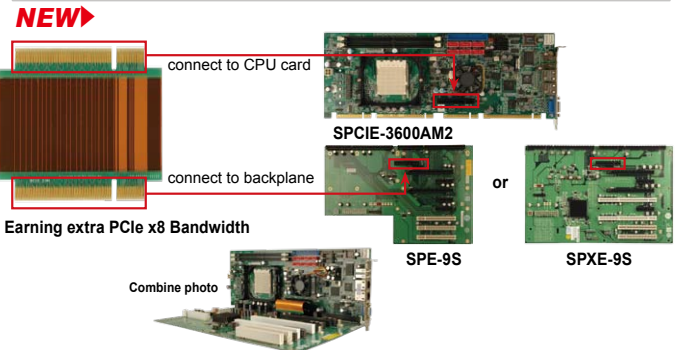


Ordering Information

- SPXE-14S-R10 14-Slot PICMG 1.3 Backplane with 1 PCIe x16 (x8 signal) and 12 PCIe x1
- RACK-305G-R20 4U rack-mount industrial chassis
- RACK-360G-R20 4U rack-mount industrial chassis
- RACK-814G-R20 4U rack-mount industrial chassis
- RACK-3000G-R20 4U rack-mount industrial chassis

X8-PCIE-CB-R10

PCIe x8 conversion board for PICMG 1.3 server grade SBC



Earning extra PCIe x8 Bandwidth

Combine photo

Ordering Information

- X8-PCIE-CB-R10 PCIe x8 conversion board for PICMG 1.3 server grade SBC
- SPCIE-3600AM2 Full-size PICMG 1.3 CPU card, server grade
- SPE-9S 9 slot PICMG 1.3 backplane with 2 PCIe x16 (x8 signal) 3 PCIe x4, and 3 PCI
- SPXE-9S 9 slot PICMG 1.3 backplane with 2 PCIe x16 (x8 signal) 2 PCIe x4, 2 PCI-X and 2 PCI

1 Industrial Computing Solutions

2 Embedded Computing Solutions

3 RISC-Based Embedded Solutions

4 Industrial Data Collector/ Server Solutions

5 Video Capture Solutions

6 I/O Communication Solutions

7 Panel Solutions

8 Power Supply/ Network Communication/ Peripherals