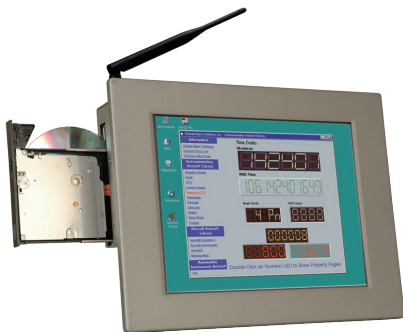


PPC-3708A/3710A/3712A

8.4"~12.1" Fanless Panel PC with Intel® Atom™ Processor



Fanless

Features

1. 8.4"~12.1" TFT LCD with resistive touch screen
2. Intel® Atom™ Processor N270 CPU 1.6GHz for Ultra Low Voltage Fan-less support
3. System memory up to 2 GB DDR2 RAM
4. Dual 10/100 Mbps Ethernet
5. One Compact Flash® Type II socket
6. Optional 802.11 b/g wireless LAN module

Specifications

Model	PPC-3708A/NANO-ATOM	PPC-3710A/NANO-ATOM	PPC-3712A/NANO-ATOM
LCD	LCD Size : 8.4" Resolution : 800 x 600 (SVGA) Brightness : 400 cd/m ² Contrast Ratio : 500:1 Viewing Angle (H-V) : 120°/100° Backlight MTBF : 50,000hrs	LCD Size : 10.4" Resolution : 800 x 600 (SVGA) Brightness : 400 cd/m ² Contrast Ratio : 500:1 Viewing Angle (H-V) : 120°/100° Backlight MTBF : 50,000hrs	LCD Size : 12.1" Resolution : 1024 x 768 (XGA) Brightness : 450 cd/m ² Contrast Ratio : 700:1 Viewing Angle (H-V) : 160°/160° Backlight MTBF : 50,000hrs
CPU	Intel® Atom™ Processor N270 1.6GHz with a 533MHz FSB		
Chipset	Intel® 945GSE/ICH7M		
Memory	One 200-pin 533MHz DDR2 SDRAM SO-DIMM supported (system max. 2GB)		
VGA	Intel® 945GSE supports dual display		
SSD	CF Type II		
Drive Bay	1 x 2.5" SATA HDD Bay with Anti-Shock	1 x 2.5" SATA HDD Bay with Anti-Shock	1 x 2.5" SATA HDD Bay with Anti-Shock 1 x Slim Type CD-ROM Bay
Ethernet	Dual PCIe Realtek 8111CP GbE chipsets		
Audio	5.1 channel audio kit with Realtek ALC655 AC'97 codec		
I/O	2 x RS-232 1 x RS-232/422/485 2 x USB 2.0 1 x VGA	1 x PS/2 for KB/MS 2 x Giga LAN Port 3 x Audio (Line-in, Line-out, MIC-in) 1 x Power Jack (Lockable)	
Expansion Slot	1 x PCIe mini card for 802.11 b/g wireless LAN module (optional)		
Touch Screen	4-wire resistive type with RS-232 interface	5-wire resistive type with RS-232 interface	5-wire resistive type with RS-232 interface
Operating Temperature	- 10°C~50°C with CF Card 0°C~50°C with HDD		
Storage Temperature	- 20°C~60°C		
Vibration	5~17Hz 0.1" double amplitude displacement 17~640 Hz 1.5G acceleration peak to peak		
Shock	10G acceleration peak to peak. (11ms)		
Relative Humidity	5% ~ 95% @ 60°C, non-condensing		
Net/ Gross Weight	2.2 kg / 4.4 kg	3.4 kg / 5.8 kg	6 kg / 8 kg
Dimensions (W x H x D)	244 mm x 178 mm x 80 mm	311.5 mm x 242 mm x 77.8 mm	340 mm x 276.7 mm x 73.4 mm
Power Input	AC Adapter - P/N: 63000-FSP0841ADC11118-RS - AC Input : 90~240VAC@ 50/60Hz - DC Output : 84W, 12VDC		
Front Panel Protection	IP 65 Compliant		
Certificate	Meets CE, FCC, CB, CCC		